



REGIONALNA
KONFERENCJA
WARSZTATOWA  eTwinning

**TRANSFORMACJA CYFROWA
W SZKOLE PODSTAWOWEJ
I PONADPODSTAWOWEJ**

24 LUTEGO 2024
I LICEUM OGÓLNOKSZTAŁCĄCE
IM. KAZIMIERZA JAGIELLOŃCZYKA W SIERADZU

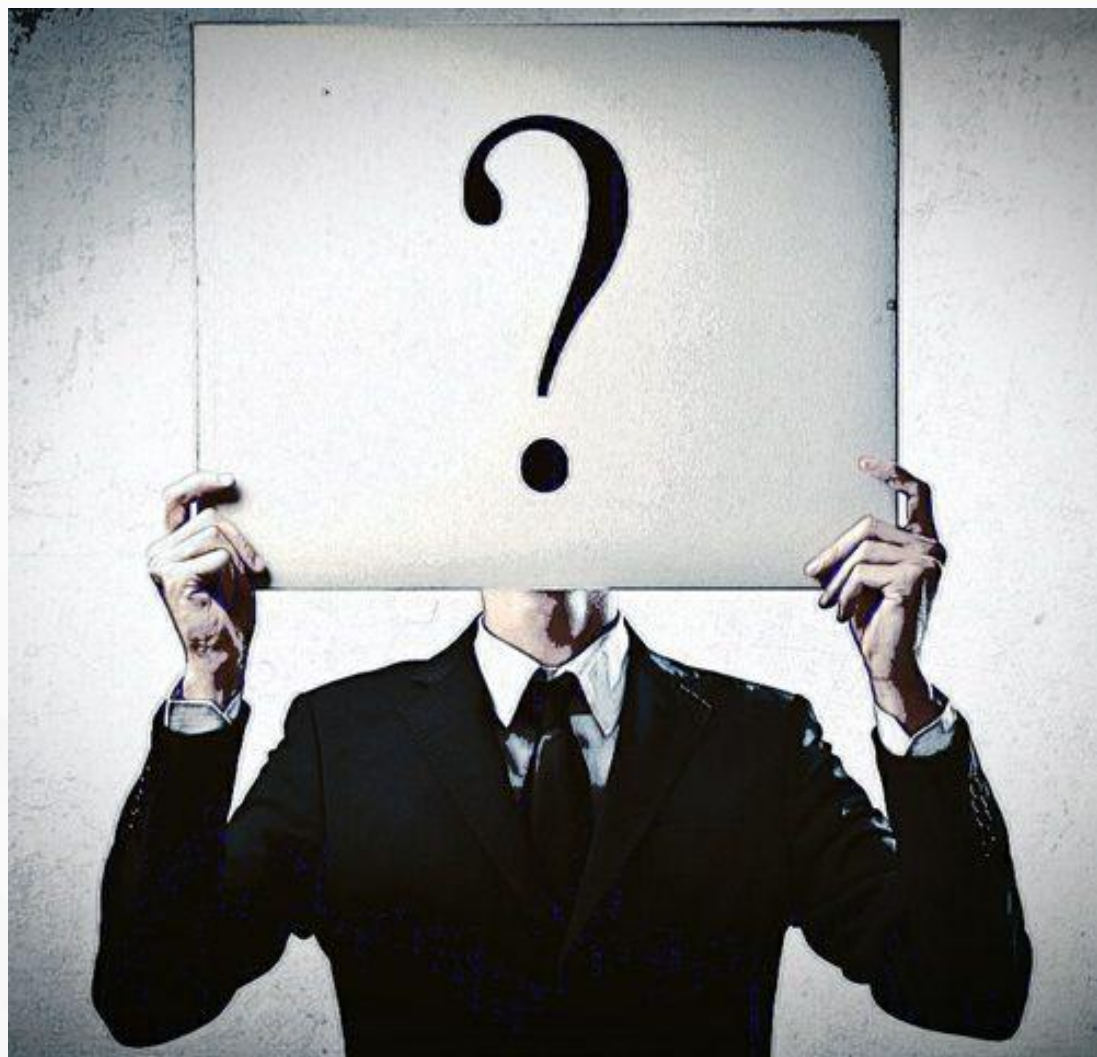
Rejestracja na: WWW.ETWINNING.PL



Innowacyjnie, czyli jak? O korzyściach edukacyjnych z prowadzenia interdyscyplinarnych projektów w szkole

Adam Stępiński

Kim jesteś?



Co to jest innowacja w edukacji?



Co to jest innowacja w edukacji?

Innowacja pedagogiczna

to każde nowatorskie rozwiązanie programowe, organizacyjne lub metodyczne, mające na celu poprawę jakości pracy w szkole.

Co to jest innowacja w edukacji?

- Z czym kojarzy Ci się innowacja?
- Co daje innowacja szkole, nauczycielowi i uczniom?
- Co powinna zawierać innowacja?
- Czy innowacje są potrzebne?

Co to jest innowacja w edukacji?

Przykłady innowacji w edukacji:

- technologie edukacyjne,
- metody nauczania,
- personalizacja nauczania,
- innowacje w ocenianiu,
- globalne nauczanie i uczenie się,
- zastosowanie gier edukacyjnych.

Jak poznać partnerów w ciekawy sposób?



Jak poznać partnerów w ciekawy sposób?

The heroine of our project is

q+ ↑ -p+ □ y=e

up

yen

fu+ sk+z+ nt+a=e

fuel

sky

ant

bath

We are from ... ?



ny

n=B c=t



cow

We are ...



fries

s=n+d+ n=l



ny

24-2-21

14



12

2

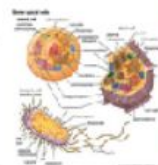


Jak poznać partnerów w ciekawy sposób?

Zagadka :)



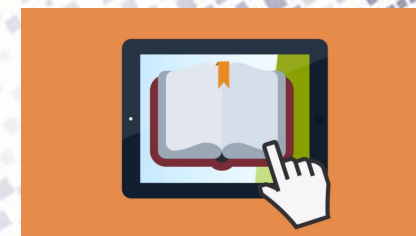
Here we are 😊 1H = 100-76 (♀ only)



Jak poznać partnerów w ciekawy sposób?

Kilka pomysłów na kreatywne poznanie się:

- zebranie kilkunastu pytań z grupy, wymiana zestawów pytań, odpowiedzi wraz z ilustracjami na wspólnej prezentacji,
- nagranie pytań dla naszych partnerów, wymiana ich i nagranie odpowiedzi, stworzenie filmu (“Here we are ...”),
- tworzenie międzynarodowego Kalendarza Kulturowego,
- współpraca, pytania i wymiana informacji na blogu “Nasze Światy”,
- wspólne opracowanie książeczki online “Together - in search of the Future”.



Tożsamość - innowacyjne pomysły

Widzę ...

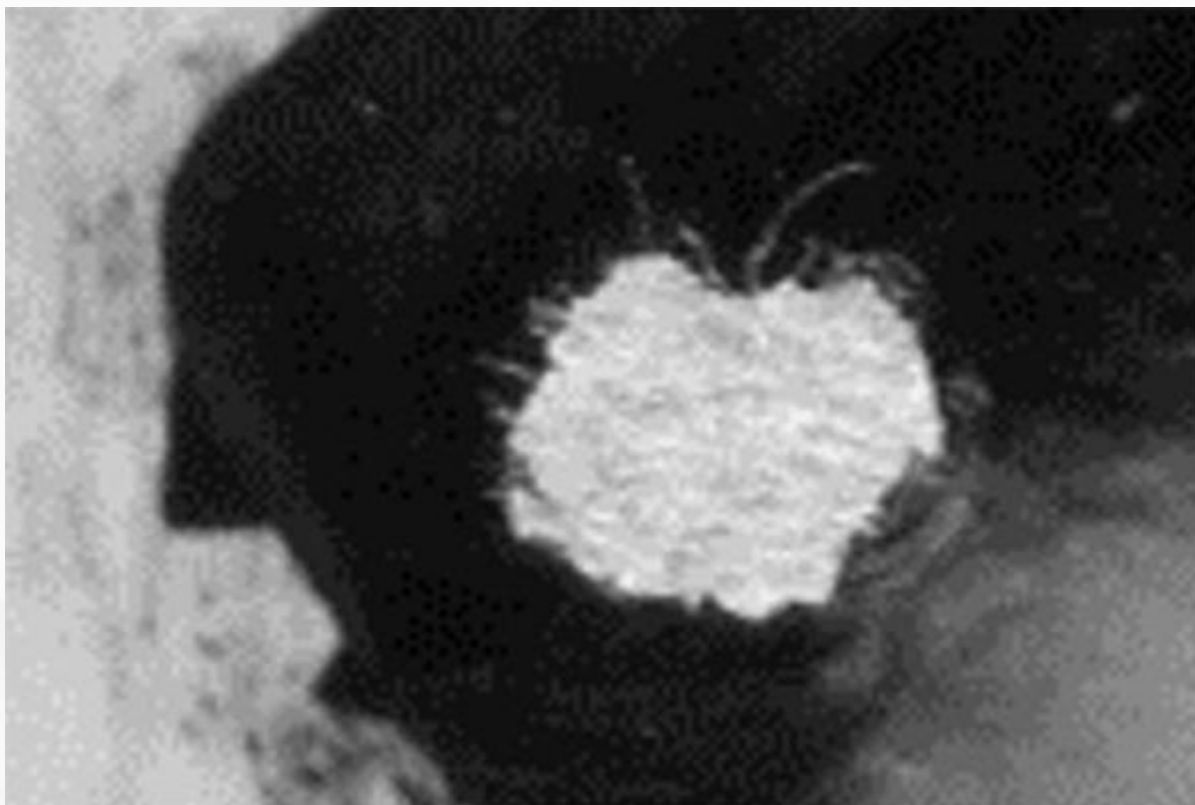
Przypuszczam ...

Jestem ciekawy ...



Tożsamość - innowacyjne pomysły

Co widzisz? <https://www.storiesthatmove.org/en/>



Tożsamość - innowacyjne pomysły

Co widzisz? <https://www.storiesthatmove.org/en/>



Tożsamość - innowacyjne pomysły

Co widzisz? <https://www.storiesthatmove.org/en/>



Tożsamość - innowacyjne pomysły

Co widzisz? <https://www.storiesthatmove.org/en/>



Tożsamość - innowacyjne pomysły

Co widzisz? <https://www.storiesthatmove.org/en/>



Tożsamość - innowacyjne pomysły

Nasza tożsamość -

<https://www.storiesthatmove.org/pl/>

<https://www.youtube.com/watch?v=rDFTWpcZtBE&t=6s>

Nasza tożsamość - <https://www.storiesthatmove.org/pl/>

Co czyni ludzi innymi? Na czym polegają różnice pomiędzy ludźmi?

.....
.....
.....

Opisz siebie

Wyobraź sobie, że jesteś osobą ze zdjęcia i żyjesz jej życiem. Co byś powiedział/a o sobie?
Uzupełnij zdania.



Tożsamość - innowacyjne pomysły

Czy takie zadania wpływają na poprawę jakości pracy w grupie (w szkole)?

Czy takie zadania przyczyniają się do rozwijania (4Cs):

- krytycznego myślenia,
- kreatywności,
- współpracy,
- komunikacji?

Czy pomagają w rozwijaniu umiejętności społecznych; umiejętności korzystania z informacji, technologii i mediów, rozwijają elastyczność, przywódczość i inicjatywność (umiejętności XXI wieku)?

Efektywne korzystanie z technologii



ZADANIA



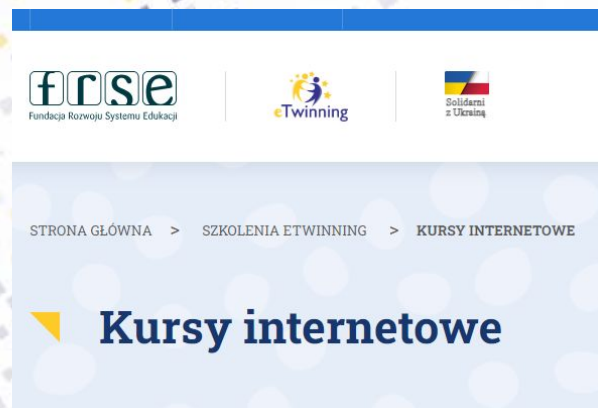
Efektywne korzystanie z technologii



padlet

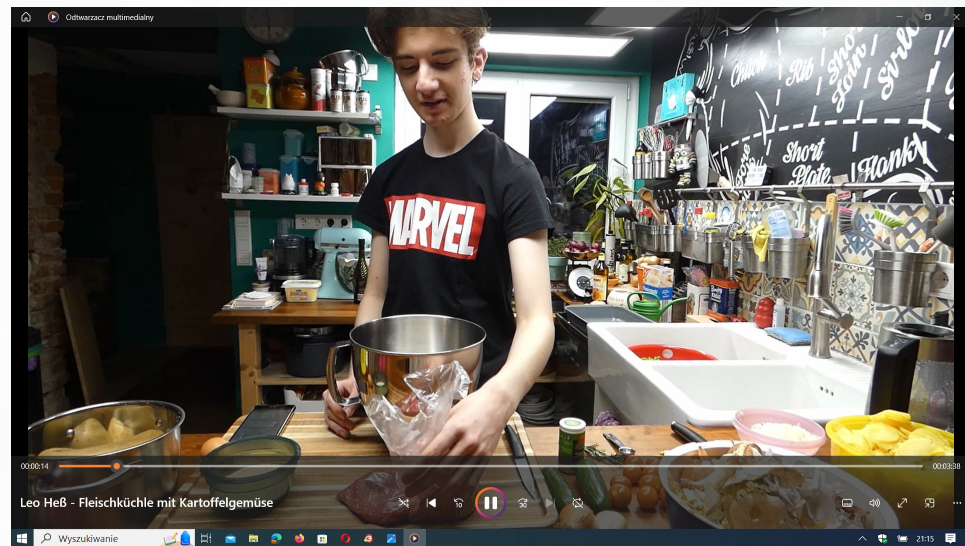
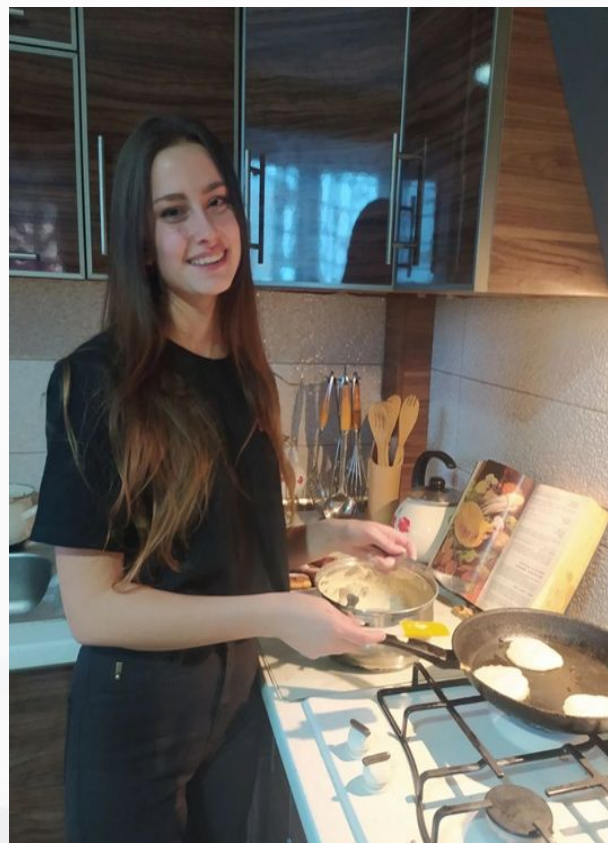


Efektywne korzystanie z technologii





Kuchnia jak życie - podróż do Frankonii i na Podkarpacie



Elżbieta II i jej czasy

<https://padlet.com/stepadam/questions-elisabeth-ii-and-her-times-jkoecpg1cvo5ic9n>

Elisabeth II and her times the 1920s

1926 Princess Elizabeth (later the Queen Mother) was born at 17 Windsor Street, London. Her father was King George V and her mother Queen Mary.

1926 She was named in honor of the Queen Mother and her mother, Queen Mary.

1920s By the end of the 1920s, the world was in a period of relative peace and stability. The economic depression of the 1930s had not yet begun, and the world was still recovering from the effects of World War I.

1920s Great powers had been displaced during the War and Britain was now left as the dominant power in the world. The economic depression of the 1930s had not yet begun, and the world was still recovering from the effects of World War I.

1920s By the end of the 1920s, the world was in a period of relative peace and stability. The economic depression of the 1930s had not yet begun, and the world was still recovering from the effects of World War I.

1920s There were large numbers of immigrants in the United States, and the country was still recovering from the effects of World War I.

1920s The first commercial flight was in 1914, and the world was still recovering from the effects of World War I.

1920s The first commercial flight was in 1914, and the world was still recovering from the effects of World War I.

1920s The first commercial flight was in 1914, and the world was still recovering from the effects of World War I.

Elisabeth II and her times the 1930s

1930 Elizabeth's sister, Princess Margaret Rose, was born.

1936 George VI died, and Edward VIII became King.

1936 Edward VIII abdicated in order to marry the American divorcee Wallis Simpson.

1936 Her Majesty the Queen Mother died.

1937 Elizabeth became a Girl Guide at the age of 11.

1937 Coronation of George VI at Westminster Abbey.

1939 Elizabeth celebrated her 15th birthday and began a period of study at home under the supervision of her governess, Mrs. Maud Grieve.

1939 Britain declared war on Germany.

Elisabeth II and her times the 1940s

1940 The war years: In 1940, the young Princess Elizabeth was moved for her safety to Windsor Castle, where she spent most of the war years. Her public appearances were limited.

1942 On the evening of her sixteenth birthday, Princess Elizabeth undertook her first appearance in a military uniform during a parade at Windsor Castle. She had been given the role of honorary colonel of the Grenadier Guards which symbolized her military involvement in the war effort.

1944 Princess Elizabeth was the Single Private Driving Class Show in 1944.

1944 The Princess completed the first Royal Windsor Horse Show in 1944.

1944 During a Norwegian gang search in a cottage with her sister as prisoner, Princess Elizabeth was the Single Private Driving Class.

1944 Her Majesty the Queen Mother of the stage.

1945 In the years 1941-1944, she and her sister acted in pantomimes of Windsor Palace, and the proceeds from the performances were donated to the soldiers.

1945 In 1945, she joined the Auxiliary Territorial Service, working in a canteen and working in the Home Guard. Through her service in the ATS, she became the first woman in the history of the British royal family to wear full time in the military.

1947 Marriage to Prince Philip.

1947 In November 1947, Elizabeth married Philip Mountbatten, 6th Earl of Elgin, Prince of Greece and Denmark. Their marriage lasted 73 years until his death in April 2021.

1948 Prince Charles - The King.

1948 Her first child, Prince Charles (Charles Philip Arthur George), was born November 14, 1948, at Buckingham Palace.


1949 The Queen and Mother.

1949 Between 1949 to 1951, a young princess Elizabeth made her first public appearance at the age of 21 when she had been stationed on the island with the army.


:Padlet
Adam + 18 • 8 miesięcy

Questions: Elisabeth II and her times

Which of Elizabeth II and his wife's grandchildren will officially retire from the royal family in 2020?




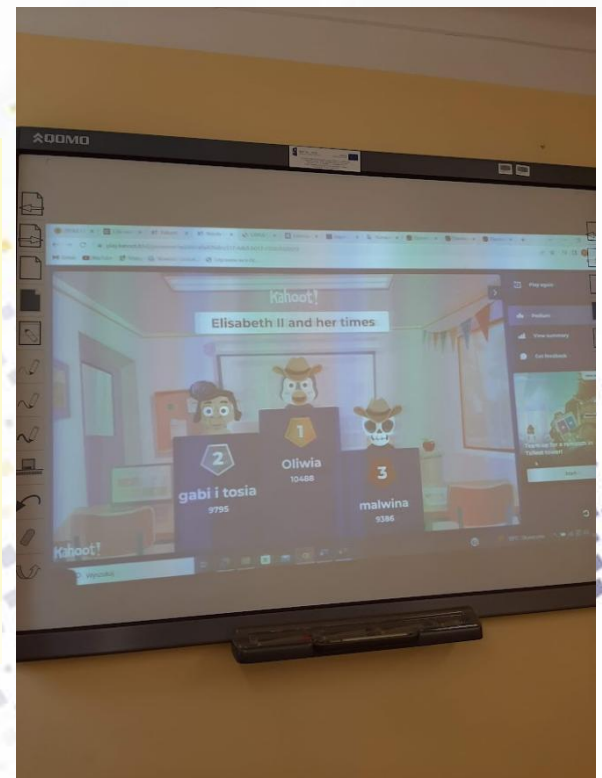
What does mean the "R" in Her Majesty's signature mean?



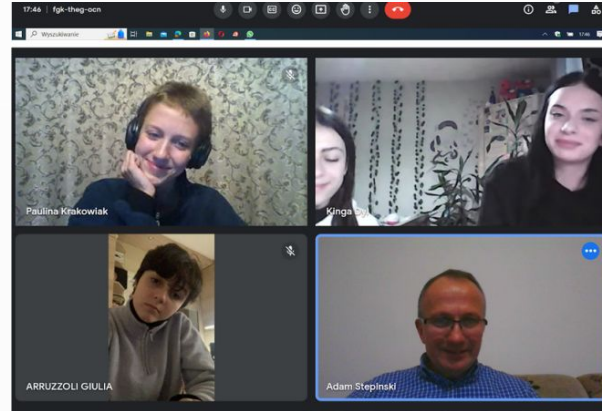
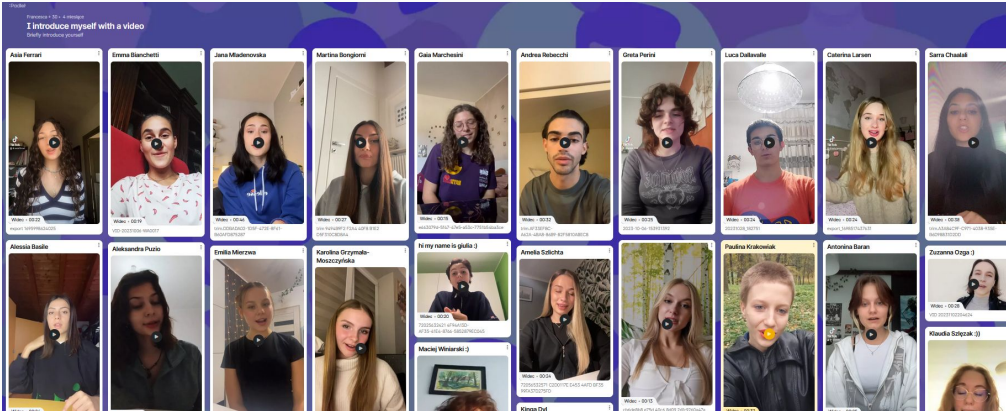
When used by Queens, the "R" stands for "Regina," or

Which grandchildren did Queen Elisabeth II like the most?





Ubierz zmianę - Dress the Change



Erasmus+

WHAT WE SHOULD OR SHOULDN'T DO TO REDUCE CARBON FOOTPRINT?

REDUCE YOUR CARBON FOOTPRINT

What should we do?

- 1. Use public transport
- 2. Turn off lights
- 3. Turn off the tap
- 4. Turn off the TV
- 5. Turn off the computer
- 6. Turn off the printer
- 7. Turn off the microwave
- 8. Turn off the oven
- 9. Turn off the hair dryer
- 10. Turn off the iron
- 11. Turn off the clothes dryer
- 12. Turn off the space heater
- 13. Turn off the water heater
- 14. Turn off the pool heater
- 15. Turn off the hot water tank
- 16. Turn off the furnace
- 17. Turn off the boiler
- 18. Turn off the radiator
- 19. Turn off the window
- 20. Turn off the door

What shouldn't we do?

- 1. Don't drive a car
- 2. Don't fly
- 3. Don't take a plane
- 4. Don't take a train
- 5. Don't take a bus
- 6. Don't take a taxi
- 7. Don't take a limo
- 8. Don't take a helicopter
- 9. Don't take a boat
- 10. Don't take a yacht
- 11. Don't take a jet ski
- 12. Don't take a speedboat
- 13. Don't take a motorboat
- 14. Don't take a fishing boat
- 15. Don't take a tugboat
- 16. Don't take a ferry
- 17. Don't take a cable car
- 18. Don't take a ski lift
- 19. Don't take a gondola
- 20. Don't take a chairlift

CO₂ CARBON FOOTPRINT

what should we do and what we shouldn't do to reduce it?

A carbon footprint is the total amount of greenhouse gases (including carbon dioxide and methane) that are generated by our actions.

Carbon Footprint of Global Tourism

Category	Percentage
Transportation	41%
Accommodation	12%
Food & Beverage	12%
Shopping	12%
Other	13%

BAD HABITS

- using cars, vans, buses or planes
- buy fast fashion clothes
- leaving running water or turned on lights
- not recycling garbage



ECOLOGY 101

TRANSPORTATION

RECYCLING

WATERCONOMY

ENERGY USAGE

WASTE MANAGEMENT

ENVIRONMENTAL SUSTAINABILITY

WHY DOES IT MATTER?

WAYS OF BEING MORE ECOLOGICAL

MISTAKES YOU SHOULD AVOID

LEAVING DEVICES ON STANDBY

EXCESSIVE USE OF PLASTIC BAGS

CLIMATE CHANGE

CLIMATE CHANGE

CLIMATE CHANGE

Carbon Footprint effects

- climate change
- air pollution
- death of animals
- sea and ocean levels are rising
- emigration of people

What should we do?

- buy less and use second hand shops
- riding by bike instead of using vehicles
- do shopping in the local shops
- put your trash into the bin
- turning off electricity



Projekty eTwinning

Czy takie zadania wpływają na poprawę jakości pracy w grupie (w szkole)?

Czy takie zadania przyczyniają się do rozwijania (4Cs):

- krytycznego myślenia,
- kreatywności,
- współpracy,
- komunikacji?

Czy pomagają w rozwijaniu umiejętności społecznych; umiejętności korzystania z informacji, technologii i mediów, rozwijają elastyczność, przywódcość i inicjatywność (umiejętności XXI wieku)?

Zabawa - taniec małp

https://www.youtube.com/watch?v=SBH_u-vEK30





Dziękujemy za uwagę

Krajowe Biuro eTwinning
Fundacja Rozwoju Systemu Edukacji
Al. Jerozolimskie 142 A
02-305 Warszawa
Tel.: +48 22 46 31 4



etwinning@frse.org.pl



eTwinning Polska



eTwinning Polska



eTwinning Polska



@eTwinningPolska

