

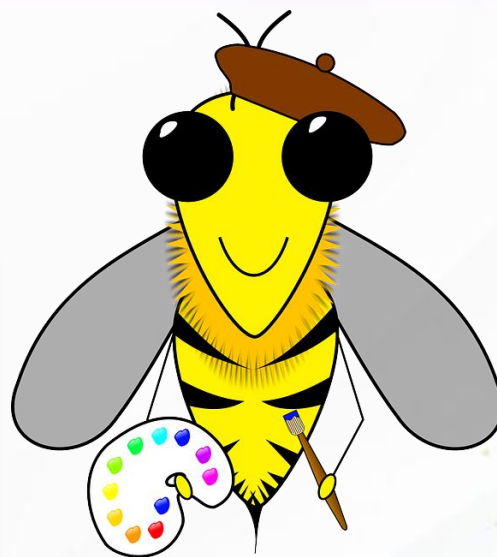


# Polish-Italian Bilateral eTwinning seminar: My first project with an eTwinning Ambassador.

30.03 - 01.04.2023, Gdańsk, POLAND



# My garden is a place of work for bees



# What are we going to do?

**Organization  
of project  
work**

**Pre-  
evaluation  
for teachers**

**Brainstorming**





# Project

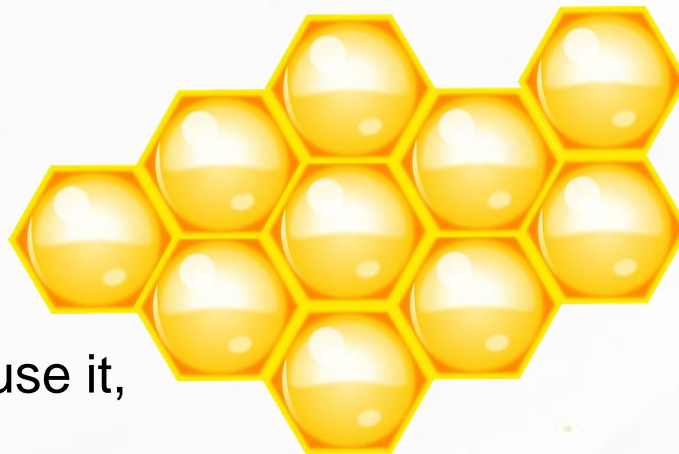
During eTwinning project we will meet honeybees and their friend Bee-Bot robot and... invite them to our garden.



## AIMS:

Child:

- 🐝 learns how honey is formed and how to use it,
- 🐝 learns the nutritional value of honey,
- 🐝 realizes the importance of bees in nature,
- 🐝 solves puzzles,
- 🐝 actively participates in classes,
- 🐝 learns the terms: honey, bee putty, wax, beekeeper, beehive, apiary,
- 🐝 learns how to use ICT tools,
- 🐝 learns new words in foreign language.



# Project plan

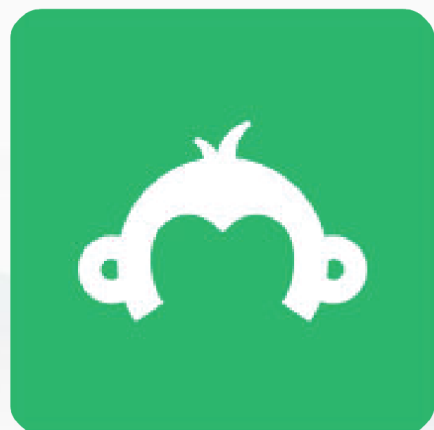


Google Forms

<https://docs.google.com/document/d/1xYXRiY3v-sdDLCHbeDVLQjaRk2NK5MdVfqa7IcYEnBk/edit?usp=sharing>



<https://www.surveymonkey.com/r/23CTFQZ>





# Working bee team



[https://www.canva.com/design/DAFePAuDJzl/qn8jH7NUXNIkRo10gxM4hg/edit?utm\\_content=DAFePAuDJzl&utm\\_campaign=designshare&utm\\_medium=link2&utm\\_source=sharebutton](https://www.canva.com/design/DAFePAuDJzl/qn8jH7NUXNIkRo10gxM4hg/edit?utm_content=DAFePAuDJzl&utm_campaign=designshare&utm_medium=link2&utm_source=sharebutton)







anna-urbasik@wp.pl







**Dziękujemy za uwagę**

Krajowe Biuro eTwinning  
Fundacja Rozwoju Systemu Edukacji  
Al. Jerozolimskie 142 A  
02-305 Warszawa  
Tel.: +48 22 46 31 4



[etwinning@frse.org.pl](mailto:etwinning@frse.org.pl)



[eTwinning Polska](#)



[eTwinning Polska](#)



[eTwinning Polska](#)



[@eTwinningPolska](#)

